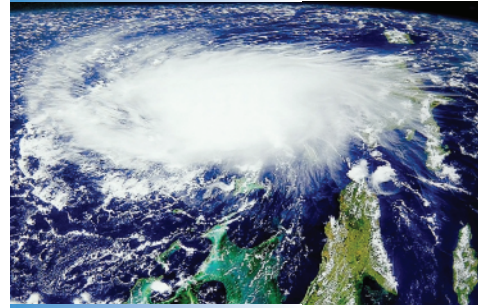




Architects - Engineers - Contractors



Copyshops - Reprographics



Geographic Information Systems



Government - Municipalities

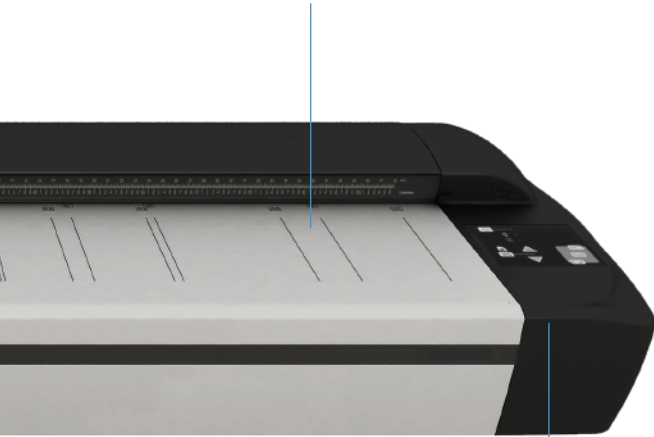


## ScanPlus 7 36" Scanners

Expand your business opportunities with GTCO CalComp's versatile ScanPlus 7 Series of 36" scanners, featuring advanced technology and quality imaging for color and monochrome scanning. The 36" imaging area is designed to facilitate archival and reprographic tasks with a wide variety of large technical documents, detailed maps and drawings, or color posters and architectural sketches – all at the highest resolution and speed. You get exceptional professional-grade performance with 600dpi optical resolution with speeds of up to 12 inch/second. With uncompromising image quality standards, ScanPlus 7 36" scanners are designed for high-volume productivity for businesses-critical imaging tasks. Whether you are a private business, government or print-for-pay, GTCO CalComp's full range of ScanPlus 7 scanners is the right solution for improved efficiency and productivity.

See more at [www.gtccalcomp.com](http://www.gtccalcomp.com)

4-Channel CCD Technology produces unparalleled image quality



Extended Data Transfer Rate improves scanner speed at high resolution

## Features

- 600dpi optical resolution standard
- 48-bit color and 16-bit grayscale image data capture from 4-channel CCD technology
- Ultra fast USB 2.0 interface with xDTR (Extended Data Transfer Rate)
- On-board Image Processing: Built-in Sharpen, Blur, Descreen, Error Diffusion, Adaptive Thresholding
- Scan-to-Net function for scanner sharing over a network, and sending files to remote PCs
- Color calibration to sRGB color space
- Upgrade to PLUS model to get higher speed and resolution

### Image Quality Without Compromise

With 600dpi optical resolution, the combination of highly sensitive 4-channel CCD cameras and full-sized high-quality camera lenses, ScanPlus 7 HD736 and HD936 scanners provide the best image quality available in wide format scanning. With image processing performed inside the scanner, your PC is free to run software more efficiently.

### Speed When You Need

GTCO CalComp ScanPlus 7 HD736 and HD936 wide format scanners are the fastest in the business with up to 12 inch/second scanning speeds. With two unique models in four different configurations, choosing the right blend of speed and connectivity for your business is simple.

SPECIFICATIONS	ScanPlus 7 HD736		ScanPlus 7 HD936	
	BASE	PLUS	BASE	PLUS
Optical Resolution	600dpi		600dpi	
Maximum Resolution	1200dpi	9600dpi	1200dpi	9600dpi
Maximum Scan Width	36in. (914mm)		36in. (914mm)	
Maximum Media Width	44in. (1118mm)		44in. (1118mm)	
Maximum Media Thickness	0.6in. (15mm)		0.6in. (15mm)	
Accuracy	0.1% +/- 1 pixel		0.1% +/- 1 pixel	
Scanning Speed (inch/sec.):				
400dpi (Turbo) 24-bit RGB Color	0.6	1.0	1.5	3.0
400dpi (Turbo) 8-bit Index Color	1.5		3.0	
400dpi (Turbo) 8-bit Grayscale	12.0		12.0	
400dpi (Turbo) 1-bit Monochrome	12.0		12.0	
Interface:				
High Speed USB 2.0 with xDTR	✓		✓	
Power	110/220/240V, 60/50cs, 180W			
Weight & Dimensions	61 kg / 55" x 19" x 7" inches (139 x 46 x 18 cm)			
Device Drivers	Windows XP, Server 2003, Vista (32-bit only)			

See our entire product range and download further details at [www.gtccalcomp.com](http://www.gtccalcomp.com)

Corporate Office  
GTCO CalComp, Inc.  
7125 Riverwood Drive  
Columbia, Maryland 21046  
Tel: 410.381.6688 or 1.800.344.4723  
Fax: 410.290.9065  
E-mail: [Sales@gtccalcomp.com](mailto:Sales@gtccalcomp.com)

Western Sales Office  
GTCO CalComp, Inc.  
8224 East Evans Road  
Scottsdale, Arizona 85260  
Tel: 480.948.6540 or 1.800.856.0732  
Fax: 480.948.5508  
E-mail: [Sales@gtccalcomp.com](mailto:Sales@gtccalcomp.com)

European Sales Headquarters  
GTCO CalComp GmbH  
Kreiller Strasse 24  
81673 Muenchen, Germany  
Tel: +49 (0) 89.37012.0  
Fax: +49 (0) 89.37012.12  
E-mail: [EUSales@gtccalcomp.com](mailto:EUSales@gtccalcomp.com)

**GTCO CalComp**  
P E R I P H E R A L S